

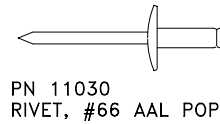
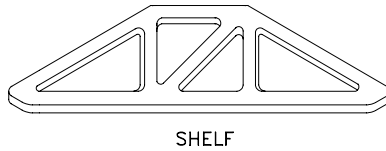
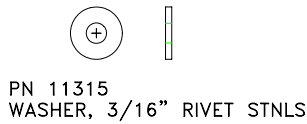
# INSTRUCTIONS

## TUFWAY® SHELF INSTALLATION

### INTRODUCTION

Satellite portable restrooms and accessories must be assembled according to approved assembly procedures. Variations in assembly could adversely affect product life and warranty.

### HARDWARE

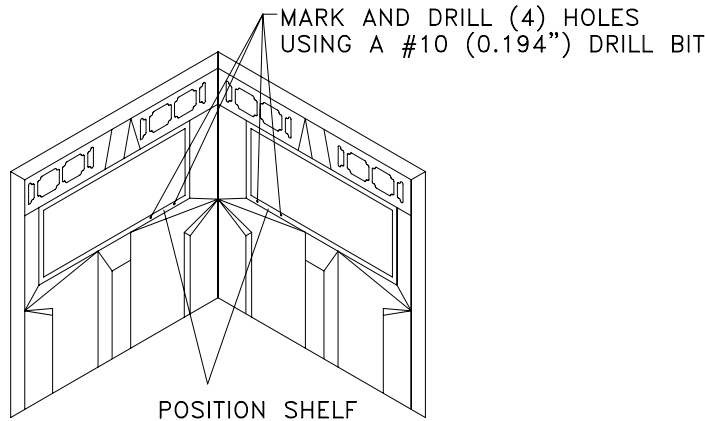


### Tools

- DRILL ELEC/CORDLESS
- #10 DRILL BIT
- RIVET GUN

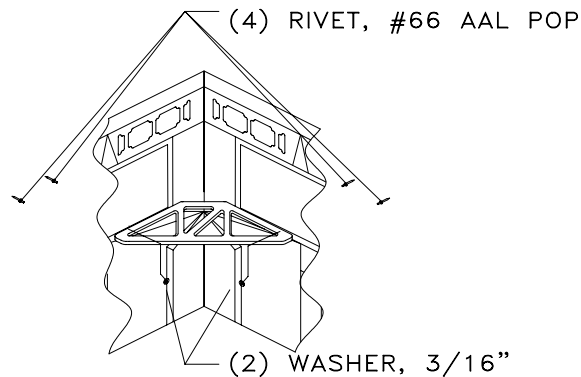
#### 1. Mark and drill holes

Place the shelf in the rear corner, against the side and rear panels in the groove below the logo area, and mark the holes.



#### 2. Fasten the shelf to the panel

Position the shelf so the holes line up with the holes drilled in the panel. Install rivets from outside. Use back up washer on two rivets farthest from corner.



Satellite Industries Europe: 67 avenue de la Toison d'Or - 1060 Bruxelles - Belgium  
tel : 0032 / 2-542 56 56 fax : 0032 / 2-542 56 57  
moreinfo@satellite.be - www.satellite.be